

With a mission to enhance the quality of life in the UAE, Al Raaya Drug Store upholds the highest standards of integrity, excellence, and customer satisfaction. We are proud to be your first choice for medical supplies, ensuring that the health and well-being of our community always come first.



## GENERAL ITEMS

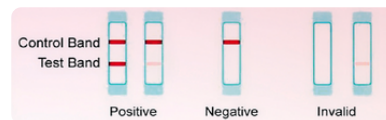


### PREGNANCY TEST

#### ONE STEP PREGNANCY TEST

Can be used as early as the first day of missed period and any thereafter.

**Sensitive - Simple - Rapid - Precise**



### NEBULIZER KIT

#### NEBULIZER MASK

It is made of soft clear plastic, latex free and are anatomically formed for comfort.

**ADULTS & KIDS**



### NEBULIZER COMPRESSOR

**N-03G**

#### NEBULIZER COMPRESSOR GOLD

It is a high-quality device designed to deliver medication directly to the respiratory system.





**BP MONITOR**

**N-04**

**AUTOMATIC BLOOD PRESSURE MONITOR**

Intelligent pressurize and decompress design, with IHB heart rate monitoring function, more practical.



**ADHSIVE WOUND DRESSING PAD**

**NON-ADHERENT NON-WOVEN STERILE**

Item No.	Size:	Box
801011	6 x7cm	100Pcs
801012	6x10cm	50Pcs
801013	9 x10cm	30Pcs
801014	9 x 15cm	30Pcs
801015	10 x 20cm	25Pcs
801016	10 x 25cm	25Pcs



**WOUND DRESSING WATERPROOF AND TRANSPARENT WITH ABSORBENT PAD**

**NON-ADHERENT WATERPROOF AND TRANSPARENT STERILE**

Item No.	Size:	Box
802012	6x7cm	100Pcs
802013	6 x 10 cm	50Pcs
802014	9 x10cm	50Pcs
802015	9 x15cm	50Pcs
802018	10 x 25cm	50Pcs



**WOUND DRESSING EYE PAD STERILE**

**100% COTTON SOFT BREATHABLE & COMFORTABLE**

Item Code.	Size:	Packing
818704	5x7.5cm	10Pcs
818706	6.5X9.5cm	10Pcs



**GAUZE SWAB STERILE**

Gauze swabs are made of 100% virgin cotton, soft & high absorbency, bleached perfectly, low linting and folded edge. with or without Xray detectable threads. Sterilized by EO.

Size:	Packing:
5cm x 5cm - 8ply	2Pcs/50 pouches/Box
7.5cm x 7.5cm - 8ply	2Pcs/50 pouches/Box
10cm x 10cm - 8ply	2Pcs/50 pouches/Box



**GAUZE SWAB NONSTERILE**

Made of 100% virgin cotton, soft & high absorbency, bleached perfectly, low linting and folded edge.

Size:	Packing:
5cm x 5cm	100Pcs/Box
7.5cm x 7.5cm	100Pcs/Box
10cm x 10cm	100Pcs/Box





### ABSORBENT COTTON WOOL

Cotton rolls are made of 100% bleached cotton, soft and high absorbency, with or without paper inserted are available.

Item No.	Size:	Packing
876656934	25gm	1Pcs
876656933	50gm	1Pcs
876656932	100gm	1Pcs
876656930	500gm	1Pcs
876656929	1Kg	1Pcs



### COTTON BALLS

100% bleached cotton, soft compact & uniform. High absorbent.

Item No.	Size:	Packing
B10050G	0.5 gm	100 Pkt/ctn



### CONFORMING BANDAGE

High elastic fixation bandage. lightweight. breathable and fray resistant with individual wrapping.

Item No.	Size:	Packing
876656918	5cm x 5m	12/pack
876656919	7.5cm x 5m	12/pack
876656920	10cm x 5m	12/pack
876656921	15cm x 5m	12/pack



### GAUZE BANDAGE WOVEN EDGE

Made from 100% cotton, high absorbency. Soft and comfortable. High Breathability.

Size:	Packing:
7.5cm x 4.5m	12 Pcs /Bag
5cm x 4.5m	12 Pcs /Bag
10cm x 4.5m	12 Pcs /Bag
15cm x 4.5m	12 Pcs /Bag



### COTTON GREPE BANDAGE

100% Cotton soft breathable & comfortable.

Size:	Packing:
5cm x 4.5m	12 Pcs /Bag
7.5cm x 4.5m	12 Pcs /Bag
10cm x 4.5m	12 Pcs /Bag
15cm x 4.5m	12 Pcs /Bag



### ELASTIC BANDAGE

80% cotton and 20% polyurethane, latex free & comfortable.

Size:	Packing:
5cm x 4.5m	12 Pcs /Bag
7.5cm x 4.5m	12 Pcs /Bag
10cm x 4.5m	12 Pcs /Bag





### ZINC OXIDE ADHESIVE PLASTER

Size:	Packing:
1.25cm x 4.5cm	24 Rolls /Box
2.5cm x 4.5cm	12 Rolls /Box
5cm x 4.5cm	6 Rolls /Box
7.5cm x 4.5cm	6 Rolls /Box



### NON- WOVEN ADHESIVE PAPER TAPE

Size:	Packing:
1.25cm x 4.5cm	24 Rolls /Box
2.5cm x 4.5cm	12 Rolls /Box
5cm x 4.5cm	6 Rolls /Box
7.5cm x 4.5cm	6 Rolls /Box



### TRANSPARENT PE TAPE

Size:	Packing:
1.25cm x 5m	24 Rolls /Box
2.5cm x 5m	12 Rolls /Box
5cm x 5m	6 Rolls /Box



**ALCOHOL PADS**

Saturated with 70% Isopropyl Alcohol, For External Use Only.

Size:	Packing:
876659366	100 Pcs
876659365	200 Pcs



**FABRIC CLASSIC BANDAGE**

- Stretchable
- Comfortable
- Fits Your Move Better

Packing : **30** **50** **100**



**CLEAR PLASTERS**

- Washproof
- Breathable
- Low Allergy

Packing : **40** **50**





HY0492

**COMFORTABLE BANDAGES ASSORTED**

- Comfortable Bandages
- Fabric Classic

Packing : 50



**BLUE PLASTERS**

- Waterproof
- Improved Material For Better Protection
- Metal Detectable Flexible Plastic

Packing : 30 100



HY8160

**SPOT PLASTER**

- Washproof
- Improved Material For Better Protection

Packing : 30



## CORN PLASTERS

Patches : 6



## ELASTIC COHESIVE BANDAGE

- This medical tape is easy to use.

### PACKING

5CM-24 PCS PER BOX

7.5CM-16 PCS PER BOX

10CM-12 PCS PER BOX



## KINESIOLOGY TAPE

- Kinesiology tape is really stretchy. Kase created Kinesio tape with a proprietary blend of cotton and nylon.

### PACKING

5CM X 5M ROLL





### TRIANGULAR BANDAGE

- Can be used fully unrolled as a sling.

#### PACKING

38 X 38 X 54  
95CM X 95CM X 135CM

36 X 16 X 51  
90CM X 40CM X 135CM

40 X 40 X 56  
100CM X 100CM X 141CM



### SYRINGES

- Medical grade Poly propylene compatible with any medication.

#### PACKING

SYRINGE 1ML  
27G X 1/2 (100PC)

SYRINGE 10ML  
21G X 1 1/2 LL (100PC)

SYRINGE 3ML  
23G X 1 1/4 LL (100PC)

SYRINGE 20ML  
18G 1 X 1 1/2 LL (50PC)

SYRINGE 5ML  
23G X 1 1/4 LL (100PC)



### FIRST AID BOX

- TREAT & EASE
  - Convenient For All Purposes
- Home - Office - Auto - Outdoor**



### MULTIPURPOSE KIT

- TREAT & EASE
- Convenient For All Purposes

**Home - Office - Auto - Outdoor**



### FIRST AID BOX

- TREAT & EASE

#### PACKING

120103 XL  
40X 30 X 15CM

120103L  
30X 20X 12.5 CM

120103M  
27 X 19 X 12CM



### FIRST AID STORAGE

- TREAT & EASE

#### PACKING

120203L  
40 X 30 X 14CM

120203M  
30 X 37 X 14 CM

120203S  
22 X 32 X 8CM



**RDS**  
AL RA'AYA DRUGSTORE

[WWW.ALRAAYADS.COM](http://WWW.ALRAAYADS.COM) | ADDRESS : AL AIN- DUBAI, UAE | EMAIL: [INFO@ALRAAYADS.COM](mailto:INFO@ALRAAYADS.COM)





# REHABILITATION PRODUCTS CATALOGUE



**RDS**  
AL RAAYA DRUG STORE

**STEEL WHEELCHAIRS**



**Product: 874B**

**MAG WHEELS WHEELCHAIR**

- 24" MAG rear wheels and 8" front caster provide a smooth ride.
- The wheelchair can be folded up in 11.84" for easy storage and transport
- Durable chromed carbon steel frame
- Dual cross brace enhances the structure of wheelchair
- Push to lock wheel brakes
- Fixed & padded armrests with stainless steel side guard
- Footrests with aluminium flip up footplates
- Padded oxford fabric upholstery is durable and easy to clean

MODEL	Unfolded Width	Folded Width	Seat Width	Total Height	Seat Height	Total Length	Rear Wheel Dia	Front Wheel Dia	Seat Depth	Backrest Height	Weight Capacity	NRW(KG)	GW(KG)	Carton size(mm)	PCS/CN	3PFC(Up)	4PFC(Up)
874B	64	28	46	90	51	103	24"	8"	45	40	100	18.8	20.8	94 x 28 x 92	1	116	277



**Product: 809**

**CHROMED STEEL FRAME WHEELCHAIR**

- Durable chromed carbon steel frame
- 8" PVC solid front casters
- 24" rear wheels with solid tires
- Push to lock wheel brakes
- Fixed & padded armrests with stainless steel side guard
- Footrests with aluminium flip up footplates
- Padded PVC upholstery is durable and easy to clean

MODEL	Unfolded Width	Folded Width	Seat Width	Total Height	Seat Height	Total Length	Rear Wheel Dia	Front Wheel Dia	Seat Depth	Backrest Height	Weight Capacity	NRW(KG)	GW(KG)	Carton size(mm)	PCS/CN	3PFC(Up)	4PFC(Up)
809	64	21	46	87	48	104	24"	8"	43	37	100	17.2	19.2	93 x 22 x 88	1	144	372



**Product: 902C**

**ELEVATING FOOTREST WHEELCHAIR**

- Durable chromed carbon steel frame
- 8" PVC solid front casters
- 24" rear wheels with solid tires
- Push to lock wheel brakes
- Detachable & padded armrests with stainless steel side guard
- Padded leg rests offer comfortable ride
- Detachable & height adjustable footrests with aluminium flip up footplates
- Height adjustable & comfortable leg rests.
- Padded PVC up-holstery

MODEL	Unfolded Width	Folded Width	Seat Width	Total Height	Seat Height	Total Length	Rear Wheel Dia	Front Wheel Dia	Seat Depth	Backrest Height	Weight Capacity	NRW(KG)	GW(KG)	Carton size(mm)	PCS/CN	3PFC(Up)	4PFC(Up)
902C	66	27	46	88	49	104	24"	8"	42	41	100	19.7	21.6	80 x 30 x 91	1	137	329



**Product: 973-61**



**HOT SELLING HEAVY DUTY WHEELCHAIR**

- 24" wide seat for bariatric users
- Durable chromed carbon steel frame
- Dual cross brace enhances the structure of wheelchair
- 8" PVC solid front casters is wide in 50mm that provides comfortable ride
- 24" MAG rear wheels with solid tires
- Push to lock wheel brakes
- Fix & padded armrests
- Footrests with aluminium flip up footplates
- Padded PVC upholstery is durable and comfortable

MODEL	Unfolded Width	Folded Width	Seat Width	Total Height	Seat Height	Total Length	Rear Wheel Dia	Front Wheel Dia	Seat Depth	Backrest Height	Weight Capacity	NRW	GRW	Carbon Steel	PCS/ CN	SPFCable CMTS 30" FCL	SPFCable CMTS 40" FCL
973-61	89	30	61	105	55	120	24"	6"	46	40	100	21.5	24.5	109 X 31 X 101.5	1	120	200

**Product: 954GC**



**LIGHTWEIGHT RECLINING WHEELCHAIR**

- With reclining high back, can adjust wonderful angle to make you comfortable.
- Elevating footrests with aluminium flip up footplates and comfortable leg rests, that can provide fantastic experience to user.
- Both armrests and footrests can be detachable, move disabled or sick easily.
- Coming with durable carbon steel frame with chromed finish.
- With lock wheel brakes and handles brakes, double protection.
- 24" rear wheels with solid tires and 8" front caster provide a smooth ride.

MODEL	Unfolded Width	Folded Width	Seat Width	Total Height	Seat Height	Total Length	Rear Wheel Dia	Front Wheel Dia	Seat Depth	Backrest Height	Weight Capacity	NRW	GRW	Carbon Steel	PCS/ CN	SPFCable CMTS 30" FCL	SPFCable CMTS 40" FCL
954GC	65	32	46	130	50	119	24"	8"	44	49	100	23.4	26	99 X 35X 91	1	90	220

**COMMUNE WHEELCHAIRS**



**Product: 681U - 51 (Heavy Duty)**



**COMMUNE WHEELCHAIR (U SEAT PANEL)**

- Durable chromed carbon steel frame
- Removable "U" seat panel
- Removable plastic commode pail with lid
- 8" PVC solid front casters, 24" rear wheels with solid tires
- Push to lock wheel brakes
- Flip down & padded armrests with stainless steel side guard
- Detachable footrests with PE flip up footplates
- Padded PVC upholstery is durable and easy to clean

MODEL	Unfolded Width	Folded Width	Seat Width	Total Height	Seat Height	Total Length	Rear Wheel Dia	Front Wheel Dia	Seat Depth	Backrest Height	Weight Capacity	NRW	GRW	Carbon Steel	PCS/ CN	SPFCable CMTS 30" FCL	SPFCable CMTS 40" FCL
681U-51	64	32	51	88.5	56	102	24"	8"	46	35	150	21.3	23.1	80 X 33 X 89	1	120	290



**Product: 609**

**COMMODOE WHEELCHAIR (CHROMED STEEL)**



- Durable chromed carbon steel frame
- Removable seat panel
- Removable plastic commode pail with lid
- 8" PVC solid front casters
- 24" rear wheels with solid tires
- Push to lock wheel brakes
- Fixed & padded armrests with stainless steel side guard
- Footrests with PE flip up footplates
- Padded PVC upholstery is durable and easy to clean

MODEL	Unfolded Width	Folded Width	Seat Width	Total Height	Seat Height	Total Length	Rear Wheel Dia	Front Wheel Dia	Seat Depth	Backrest Height	Weight Capacity	MM(S)	GW(S)	Carton (LxWxD)	PCS/ CN	2PFC (LxWxD)	4PFC (LxWxD)
609	63	24	45	87	52	104	24"	8"	44	40	100	18.3	21	94 X 30 X 88	1	120	244

**Product: 894**

**FOLDING COMMODOE CHAIR**



- Durable chromed carbon steel frame is foldable
- Removable plastic commode pail with lid
- Fixed armrests and backrest
- Each leg has a spring lock pin for adjusting height in 5 levels
- Each leg has an anti-slip rubber tip
- The chair is foldable for easy storage and transfer

MODEL	Unfolded Width	Seat Width	Total Height	Total Length	Seat Height	Rear Wheel Dia	Seat Depth	Backrest Height	Weight Capacity	MM(S)	GW(S)	Carton (LxWxD)	PCS/ CN	2PFC (LxWxD)	4PFC (LxWxD)
894	52	43	74-84	51	44-54	-	40	32	100	8	9	52 x 20 x 75	1	380	850

**Product: 696**

**FOLDING COMMODOE WHEELCHAIR**



- Durable chromed carbon steel frame is foldable
- Removable plastic commode pail with lid
- Comes with 3" non skid & swivel casters
- Rear casters with brake locks
- Fixed armrests and backrest
- Each leg has a spring lock pin for adjusting height in 5 levels
- The chair is foldable for easy storage and transfer

MODEL	Unfolded Width	Seat Width	Total Height	Total Length	Seat Height	Rear Wheel Dia	Seat Depth	Backrest Height	Weight Capacity	MM(S)	GW(S)	Carton (LxWxD)	PCS/ CN	2PFC (LxWxD)	4PFC (LxWxD)
696	53	42	75-85	51	46-56	3"	40	32	100	5	9	54.5 x 21 x 76	1	380	850



**Product: 898**

**SIMPLE STEEL COMMODE CHAIR**

- Durable powder coated steel frame is foldable
- Plastic seat panel
- Each leg has a anti-slip rubber tip
- The chair is foldable for easy storage and transfer

MODEL	Unfolded Width	Seat Width	Total Height	Total Length	Seat Height	Rear Wheel Dia	Seat Depth	Backrest Height	Height Cup (G)	MMWG	DMWG	Carton (mm)	PCS/CN	SPF (kg)	APF (kg)
898	40	39	45	40	45	-	40	-	100	6.3	7.3	72 x 39.5 x 26	4	1750	4180

**ALUMINIUM WHEELCHAIRS**



**Product: 834LAJ**

**LIGHTWEIGHT MANUAL ALUMINUM WHEELCHAIR**

- An ultralight wheelchair with a weight under 30 lbs.
- Durable aluminium frame with anodized finish
- Dual cross brace enhances the structure of wheelchair
- 6" PVC front casters
- 24" rear wheels with pneumatic tires
- Push to lock wheel brakes
- Drop back handle with brakes for companion to stop the wheelchair
- Fixed padded armrests
- Swing-away footrests with high strength PE flip up footplates
- Padded nylon upholstery is durable and easy to clean

MODEL	Unfolded Width	Seat Width	Seat Height	Total Height	Total Length	Rear Wheel Dia	Front Wheel Dia	Seat Depth	Backrest Height	Height Cup (G)	MMWG	DMWG	Carton (mm)	PCS/CN	SPF (kg)	APF (kg)	
834LAJ	66	29	45	92	48	100	22"	6"	44	39	100	12	13.5	77 X 30 X 74.5	1	190	480

**TRANSIT WHEELCHAIRS**



**Product: 832LABJ**

**LIGHTWEIGHT TRANSPORT WHEELCHAIR**

- Lightweight & durable aluminium frame with anodized finish.
- Dual cross brace enhances the structure of wheelchair
- 6" PVC front casters
- 12" rear wheels with MAG hubs and pneumatic tires
- Rear wheels come with wheel locks
- Drop back handle with brakes for companion to stop the wheelchair
- Fixed padded armrests
- Footrests with high strength PE flip up footplates
- Padded nylon upholstery is breathable, durable and easy to clean
- The ultralight transport wheelchair can be folded up for convenient traveling & storage

MODEL	Unfolded Width	Seat Width	Seat Height	Total Height	Total Length	Rear Wheel Dia	Front Wheel Dia	Seat Depth	Backrest Height	Height Cup (G)	MMWG	DMWG	Carton (mm)	PCS/CN	SPF (kg)	APF (kg)
832LABJ	64	25	45	91	50	12"	6"	42	40	100	10.5	12.5	65 X 26 X 77	1	146	348



**ROLLATOR**



**Product: 9188LH**

**DETACHABLE FOUR WHEEL ALUMINUM ROLLATOR**

- Aluminum frame
- Adjustable handle
- Adjustable handle height
- Soft pvc seat
- Handle grips with brake
- Detachable backrest

MODEL	Wheeled Width	Seat Width	Seat Height	Seat Length	Seat Height	Seat Wheel Dia	Arm Depth	Backrest Height	Weight Capacity	MMQ	MMQ	Carton-dims	PCS/ CN	SPQ/Case CNTS 3P P/L	SPQ/Case CNTS 4P P/L
9188LH	60	43	84-92	67	53-63	8	26	27	100	6.7	8	60 X 54 X 18	1	480	1150

**BATH SAFETY**



**Product: 736L**

**ADJUSTABLE HEIGHT SHOWER BENCHES**

- 4 legs are made of lightweight & durable aluminum tubes
- Each leg has a spring lock pin for adjusting seat height (5 Levels, from 36.5-46.5cm)
- Seat panel is made of high strength PE
- Armrests & backrest offer additional comfort
- Seat panel has some holes in order to drain the surface water and reduce the accident of slipping
- Each leg has an anti-slip rubber tip
- Support weight is up to 250 lbs.

MODEL	Wheeled Width	Seat Width	Seat Height	Seat Length	Seat Height	Seat Depth	Backrest Height	Weight Capacity	MMQ	MMQ	Carton-dims	PCS/ CN	SPQ/Case CNTS 3P P/L	SPQ/Case CNTS 4P P/L
736L	50	40	71-81	50	36-46	41	35	110	6.2	7.1	56 X 40 X 30	2	792	1896



**Product: 738LQ**

**DETACHABLE FRAME BATH CHAIR**

- 4 Legs are made of durable aluminum tubes with anodized finish
- Tool-free detachable frame
- Each leg has a spring lock pin for adjusting seat height (8 Levels, from 34-44cm)
- Seat panel is made of high strength PE
- Seat panel is ergonomically designed with curve to offer comfortable support
- Seat panel has some holes in order to drain the surface water and reduce the accident of slipping
- Each leg has an anti-slip rubber tip
- Support weight is up to 250 lbs.

MODEL	Wheeled Width	Seat Width	Seat Height	Seat Length	Seat Height	Seat Depth	Backrest Height	Weight Capacity	MMQ	MMQ	Carton-dims	PCS/ CN	SPQ/Case CNTS 3P P/L	SPQ/Case CNTS 4P P/L
738LQ	50	50	66-76	45	33-43	38	33	110	5.2	6.2	39 X 23 X 61.5	2	792	2050



**WALKING STICK WITH SEAT**



**Product: 940L**

- Lightweight & sturdy extruded aluminum tube
- A folding tripod cane can be opened to be used as a seat
- Surface with stylish color
- Ergonomically designed polypropylene handgrip can reduce fatigue & provide more comfortable experience
- Bottom tip is made of anti-slip rubber to reduce the accident of slipping
- Can withstand a weight capacity of 300 lbs.

MODEL	Total Height	Weight Capacity	NW(KG)	GW(KG)	Carton size(cm)	PCS/CN
940L	78/49	100	8	9	84 X 21 X 44	10



**Product: 943L**

- Lightweight & sturdy extruded aluminum tube with anodized finish
- A folding tripod cane can be opened to be used as a seat
- Surface with stylish color
- Handle with foam grip can reduce fatigue & provide more comfortable experience
- Bottom tip is made of anti-slip rubber to reduce the accident of slipping
- Can withstand a weight capacity of 300 lbs.

MODEL	Total Height	Weight Capacity	NW(KG)	GW(KG)	Carton size(cm)	PCS/CN
943L	84/50	100	9	10	85 X 30 X 39	10

**WALKER**



**Product: 913L**

**BUTTON FOLDING HEIGHT ADJUSTABLE WALKER**

- With aluminium frame and anodized finish, lightweight and durable.
- Each foot with a spring lock pin for adjusting height to meet user's requestment.(77-95cm)
- Push button lightly by fingers for folding up the walker.
- Handle grips with soft foams offer a comfortable and safe hold
- With anti-slip rubber, avoid accident.

MODEL	Unfolded Width	Seat Width	Total Height	Foot Wheel Dia	Weight Capacity	NW(KG)	GW(KG)	Carton size(cm)	PCS/CN	UPP Code	APP Code
961L	49	40	77-95	-	100	9.6	11	59 X 30 X 79	4	880	2110

**Product: 919L**

**BUTTON FOLDING WALKER ADJUSTABLE**



- Lightweight & durable aluminium frame with anodized finish
- Each foot with a spring lock pin for adjusting walker's height
- With a button that can be easily pushed by fingers for folding up the walker
- Handle grips with soft foams offer a comfortable and safe hold
- Walker's height can be adjusted from 30.3" – 37.4" (8 levels)

MODEL	Unfolded Width	Seat Width	Total Height	Front Wheel Dia	Weight Capacity	WHEELS	DRIVE	Carton size(L)	PCS/ CN	WPClosed	WPClosed
919L	58	46	77-95	-	100	9.6	11.8	54 X 30 X 79	4	880	2110

**Product: 9125L**

**5" FRONT WHEELS & HEIGHT ADJUSTABLE**



- Lightweight & durable aluminium frame with anodized finish
- 5" front wheels
- Each foot with a spring lock pin for adjusting walker's height
- With a button that can be easily pushed by fingers for folding up the walker
- Handle grips with soft foams offer a comfortable and safe hold
- Walker's height can be adjusted from 31.1" – 38.2" (8 levels)

MODEL	Unfolded Width	Seat Width	Total Height	Front Wheel Dia	Weight Capacity	WHEELS	DRIVE	Carton size(L)	PCS/ CN	WPClosed	WPClosed
9125L	60	49	79-97	5"	100	11	12.4	62 X 30 X 83	4	730	1760

**Product: 918L**

**PORTABLE WALKER WITH WHEEL**



- Lightweight & durable aluminium frame with anodized finish
- Each foot with a spring lock pin for adjusting walker's height
- With a button that can be easily pushed by fingers for folding up the walker
- Handle grips with soft foams offer a comfortable and safe hold
- Walker's height can be adjusted from 30.3" – 37.4" (8 levels)

MODEL	Unfolded Width	Seat Width	Total Height	Front Wheel Dia	Weight Capacity	WHEELS	DRIVE	Carton size(L)	PCS/ CN	WPClosed	WPClosed
918L	58	46	77-95	-	100	9.6	11.8	54 X 30 X 79	4	880	2110

**WALKING STICK**



**Product: 937L**



MODEL	Total Height	Weight Cap(%)	NW(KG)	GW(KG)	Carton size(cm)	PCS/ CN
937L(1)	95-118	100	9.6	10.8	101 X 31 X 31	20
937L(2)	95-118	100	9.6	10.8	101 X 31 X 31	20
937L(3)	95-118	100	9.6	10.8	101 X 31 X 31	20
937L(4)	95-118	100	9.6	10.8	101 X 31 X 31	20
937L(5)	95-118	100	9.6	10.8	101 X 31 X 31	20
937L(6)	95-118	100	9.6	10.8	101 X 31 X 31	20

**Product: 920L-948L**



MODEL	Total Height	Weight Cap(%)	NW(KG)	GW(KG)	Carton size(cm)	PCS/ CN
920L	71-94	100	7.2	7.6	65 X 16 X 27	20
930L	70-93	100	6.8	7.4	66 X 16 X 27	20
9301L	70-93	100	6.8	7.4	66 X 16 X 27	20
9296	90	100	6.6	7	95 X 16 X 29	20
948L	76-86	100	7	7.6	58 X 20 X 23	20

**Product: 927L - 920L (2)**



MODEL	Total Height	Weight Cap(%)	NW(KG)	GW(KG)	Carton size(cm)	PCS/ CN
920L (2)	71-94	100	7.2	7.6	65 X 16 X 27	20
927L	80-90	100	7.2	7.7	61 X 17 X 23	20



**Product: 933L**



- Lightweight & sturdy extruded aluminum tube with anodized finish
- With 3 different sizes, meet users special requirement.
- The upper tube & lower tube has independently a spring lock pin for adjusting arm cuff & handle height to fit different users.
- Ergonomically designed polypropylene arm cuff & foam handgrip can reduce fatigue & provide more comfortable experience
- Bottom tip is made of anti-slip rubber to reduce the accident of slipping
- Can withstand a weight capacity of 300 lbs.

MODEL	Total Height	Weight Capacity	MM(W)	CM(W)	Carton dimension	PCS/CN
933L(OXL)	108-138	100	12	13	107 X 33 X 17	20
933L(L)	95-125	100	11	12	94 X 31 X 31	20
933L(M)	87-117	100	10.5	11.5	86 X 31 X 31	20
933L(S)	79-119	100	10	11	78 X 31 X 31	20

Sizes : **S** **M** **L** **XL**

**Product: 925**



- Lightweight and excellence in quality, use easily and safely.
- Both underarm pad and handgrip can adjusted height conveniently.
- Both underarm pad and handgrip can provide power support and comfortable experience.
- With the alumina production, the surface is rust proof.
- The bottom tip is made of anti-slip rubber ,can be used anywhere. (wet ground muddy road unpaved road and so on)
- Folding easily and Detachable

MODEL	Total Height	Weight Capacity	MM(W)	CM(W)	Carton dimension	PCS/CN
925 (S)	95-115	100	14.7	16.1	101 X 32 X 31	20
925(M)	115-135	100	15.9	17.6	121 X 32 X 31	20
921(L)	135-155	100	17.3	19.2	141 X 32 X 31	20

Sizes : **S** **M** **L**

**Product: 921**



- Durable steel large quad base provides additional support
- Surface with stylish color
- The tube has a spring lock pin for adjusting handle height from 28.15"-37.01" (10 levels)
- The offset handle with polypropylene grip can reduce fatigue & provide more comfortable experience
- Bottom tip is made of anti-slip rubber to reduce the accident of slipping
- Can withstand a weight capacity of 300 lbs.

MODEL	Total Height	Weight Capacity	MM(W)	CM(W)	Carton dimension	PCS/CN
921	72-95	100	8.8	10.5	80 X 35 X 45	10

**Product: 931**



- Lightweight & sturdy extruded aluminum tube with anodized finish
- Durable steel large quad base provides additional support.
- Surface with stylish color
- The tube has a spring lock pin for adjusting handle height from 28.35" - 37.40" (10levels)
- The offset handle with foam grip can reduce fatigue & provide more comfortable experience.
- Bottom tip is made of anti-slip rubber to reduce the accident of slipping
- Can withstand a weight capacity of 300 lbs.

MODEL	Total Height	Weight Capacity	WWD(	OWD(	Carton Size(cm)	PCS/CN
931	73-96	100	8.8	10.5	80 X 35 X47cm	10

**Product: 924**



- Lightweight & sturdy extruded aluminum tube with anodized finish
- Durable steel quad small base provides additional support
- Surface with stylish color
- The tube has a spring lock pin for adjusting handle height from 25.79" - 34.84" (10levels)
- Ergonomically designed polypropylene handgrip can reduce fatigue & provide more comfortable experience.
- Bottom tip is made of anti-slip rubber to reduce the accident of slipping
- Can withstand a weight capacity of 300 lbs.

MODEL	Total Height	Weight Capacity	WWD(	OWD(	Carton Size(cm)	PCS/CN
924L	65-88	100	8.1	9.3	79 X 30 X 34cm	10

**Product: 926**



- Lightweight & study extruded aluminum tube with anodized finish
- Durable steel tripod base provides additional support
- Surface with stylish color
- The tube has a spring lock pin for adjusting handle from 25.79" - 34.84" (10 levels)
- Ergonomically designed polypropylene handgrip can fatigue & provide more comfortable experirnce
- Can with stand a weight capacity of 300 lbs.

MODEL	Total Height	Weight Capacity	WWD(	OWD(	Carton Size(cm)	PCS/CN
926	74-97	100	7.9	9.2	79 X 30 X 34cm	10



**Product: 9274L - 936L - 923L**

MODEL	Total height	Weight Capacity	NW(KG)	GW(KG)	Carton dimension	PCS/CN
9274L	85-95	100	8	8.8	74 X 30 X 21	20
936L	33-122	100	9.2	9.7	66 X 17 X 22	40
923L	85-116	100	9.8	10.7	85 X 28 X 31	20

**WALLING STICK BUSH**



**TOILET RAISER**



**Product: 669B**

- 4 inches/2 inches Raised Toilet Seat, Increase Height Over Commode, Includes Lid, Tightening Stability Safety Clamps
- Toilet seat riser is made for convenience and simplicity; Lightweight and easily portable, can be quickly interchanged and removed as needed; Durable molded plastic; Dual contoured design, Four inch lift; Can place over toilet seat
- Installation is quick and easy, no tools required; Twist and lock clamps safely secures seat to most round shape toilet rims; Front and back cut-out contour indentation allows for maximum hygiene and easy reach when wiping
- An excellent choice for seniors, limited mobility users, assisted living caregivers, the disabled, or those recuperating from hip fracture, back, lower body surgery, strains, muscle injury

**Sizes : 4 inches**



**URINAL**

**Product: 662B**

**MALE URINAL**

- 4 inches/2 inches Raised Toilet Seat, Increase Height Over Commode, Includes Lid, Tightening Stability Safety Clamps
- Toilet seat riser is made for convenience and simplicity; Lightweight and easily portable, can be quickly interchanged and removed as needed; Durable molded plastic; Dual contoured design, Four inch lift; Can place over toilet seat
- Installation is quick and easy, no tools required; Twist and lock clamps safely secures seat to most round shape toilet rims; Front and back cut-out contour indentation allows for maximum hygiene and easy reach when wiping
- An excellent choice for seniors, limited mobility users, assisted living caregivers, the disabled, or those recuperating from hip fracture, back, lower body surgery, strains, muscle injury

**Product: 663B**

**FEMALE URINAL**

- Material: plastic
- High quality plastic made, without any sharp edge.
- Easy Grip handle.
- 100ml graduation markings

**Features:**

- It features resistance to falling and pressure. It does not deform easily. The product has been processed at high temperature in the production process.
- It is sanitary, clean and convenient. It can be resistant to 90 degrees high temperature.

**Product: 661B**

**BED PAN**

- The plastic bedpan is made of plastic, which has no toxic side effect on human body.
- It is hard and tough, with superior load performance, which can help the pronation, smooth bottom, reasonable structure and more comfortable exposure of human body. The patient's first choice is bed or bedridden defecation.
- For those who have trouble getting out of bed. Durable plastic structure and traditional style. Odor resistant and easy to clean.
- Inside can apply disposable plastic bags, more concise and convenient to deal with.

**Product: 664B**

**UNI SEX URINAL**

- Plastic urinal with lid. It is a device for collecting urine that can be used by both men & women (unisex) whom are either bedridden or self-sufficient and are unable to use toilet facilities.
- It is also suitable for children
- It is made of plastic, with a capacity of 800 ml, and is anatomical with a hand grip, additional expansion lid and a graduated scale.
- After each use it is advisable to carefully wash the device with neutral soap and water and to sanitize it.
- Suitable for unisex, Scale : 100-800ml, Color : White





RD  
AL RA'AYA DRUGSTORE

- ✉ [INFO@ALRAAYADS.COM](mailto:INFO@ALRAAYADS.COM)
- 📍 AL AIN - DUBAI
- 🌐 [WWW.ALRAAYADS.COM](http://WWW.ALRAAYADS.COM)



# SUPEROrtho

IDEAL FOR THE MOTION



**RDS**  
AL RAAYA DRUG STORE



# Abdominal Binder



**B5-029**

**Deluxe 3 panel Abdominal Binder**

Back Height : 23.5cm  
Size : S . M . L . XL . XXL



**A5-001**

**Abdominal Binder**

Back Height : 20.5cm  
Size : S . M . L . XL . XXL



**A5-004**

**Ind. Back Support (Mesh)**

Back Height : 27.2cm  
Size : S . M . L . XL . XXL



**B5-020**

**3 panel Abdominal Binder**

Back Height : 23.5cm  
Size : S . M . L . XL . XXL



**C5-003**

**Neoprene Waist belt**

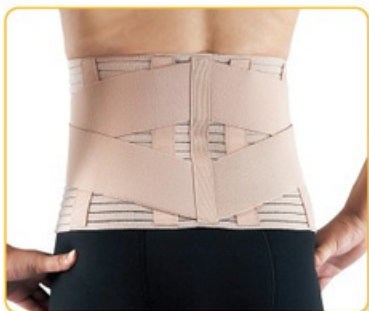
Back Height : 25cm  
Size : S . M . L . XL . XXL



**C5-004**

**Blue Neoprene Binder**

Back Height : 22cm  
Size : S . M . L . XL . XXL



**A5-008**

**Lumbar Support (Back)**

Back Height : 23cm  
Size : S . M . L . XL . XXL



**A5-008**

**Lumbar Support (Front)**

Back Height : 23cm  
Size : S . M . L . XL . XXL



**C5-001**

**7" Abdominal binder**

Back Height : 17.5cm, Length : 100cm  
Length : 115cm available  
Size : One size

**C5-002**

**9.5" Abdominal binder**

Back Height : 23.5cm, Length : 100cm  
Length : 115cm available  
Size : One size



**A5-065**

**Comfort Back Support**

Back Height : 22.5cm  
Size : S . M . L . XL . XXL



**A5-069**

**Magnetic Waist Belt Extra**

Back Height : 20.5cm  
Size : S . M . L . XL . XXL



**B5 - 001**

**2 Panels Abdominal Binder**

Back Height : 15.5cm  
Size : S . M . L . XL . XXL

# Back Support



**A5-007**

**Elastic Back Support**

Back Height : 26 cm

Size : S . M . L . XL . XXL



**B5-027**

**Airmesh Lumbar Support  
w/Cushion pad**

Back Height: 26cm | Size : S . M . L . XL . XXL



**B5-028**

**12" Breathable Lumbar Support**

Back Height : 29.5cm

Size : S . M . L . XL . XXL



**A5-006**

**Elastic Back Support**

Back Height : 26.3cm

Size : S . M . L . XL . XXL



**B2-005**

**Rib Belt (Female)**

Size : S/M . L/XL . XXL



**B2-004**

**Rib Belt (Male)**

Size : S/M . L/XL . XXL



**B5-018**

**Elastic Loop  
Back Support w/ 4stays**

Back Height : 24cm Size : S/M . L/XL . XXL



**A5-002**

**Ind. Back Support**

Back Height : 20.2cm

Size : S . M . L . XL . XXL



**B5-011**

**Lumbar Support w/ 4 stays**

Back Height : 25.7cm Size : S . M . L . XL . XXL



**02-007**

**Elastic Posture Brace**

Size : S . M . L . XL . XXL



**A5-003**

**Breathable Ind. Back Support**

Back Height : 20.2cm

Size : S . M . L . XL . XXL



# Shoulder and Clavical Support & Posture Brace



**D2-001**

**Airpene Shoulder Support**  
Size : S/M . L/XL



**D2-003**

**Airpene Shoulder Support**  
Size : S/M . L/XL



**A2-001**

**Clavicle Support**  
Size : S . M . L . XL



**O2-001**

**Clavicle Brace**  
Size : S . M . L . XL



**B2-001**

**Ventilative Vertebra Brace**  
Size : S . M . L . XL . XXL



**C2-003**

**Magnetic Back Brace (Back)**  
Size : S . M . L . XL . XXL

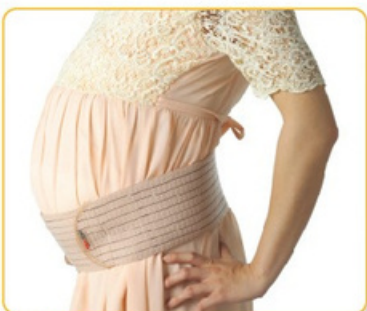


Easy Fit  
Elastic Loop

**C2-003**

**Magnetic Back Brace**  
Size : S . M . L . XL . XXL

## Maternity



**A5-010**

**Maternity Belt**  
Back Height : 10.2cm  
Size : One size



**A5-066**

**Superior Maternity Belt**  
Back Height : 17.5cm  
Size : S / M . L / XL . XXL



**A5-009**

**Maternity Belt**  
Back Height : 15.5cm  
Size : S . M . L . XL . XXL



**UB-01**

**Umbilical Belt**  
Back Height :  
Size : S . M . L . XL.



# Ankle



**A9-001**

**Elastic Ankle Wrap**

Size : S / M . L / XL . XXL



**A9-004**

**Compression Elastic Ankle**

Size : S . M . L . XL . XXL



**A9-005**

**Charcoal Compression Ankle**

Size : S . M . L . XL . XXL



**A9-009**

**Ankle Support**

Color : White / Beige

Size : S . M . L . XL . XXL



**D9-004**

**Superior Airprene Ankle Sleeve**

Size : S . M . L . XL . XXL



**A9-017**

**Active Elastic Gel Pad**

**Ankle Support**

Size : S . M . L . XL . XXL



**B9-002**

**Ankle Support**

Size : S . M . L . XL . XXL



**B9-008**

**Self- adhesive Ankle Wrap**

Width: 3" , Length : 50cm

Size : One size



**C9-001**

**Neoprene Ankle Support**

Size : S . M . L . XL . XXL



**C9-002**

**Athletic Ankle Support**

Size : S . M . L . XL . XXL



**D9-001**

**Airprene Ankle Support**

Size : One size



**O9-014**

**Memory Foam Ankle Brace**

Size : one size



O9-001

Ankle Brace w/ Adj. Lace ,  
Size : S . M . L . XL . XXL



O9-009

Fixed Ankle Walker  
Height : 16 inch , Size : S . M . L . XL



O9-010

Ankle Walker with ROM  
Height : 15.5 inch , Size : S . M . L . XL



O9-011

Short Ankle Walker with ROM  
Height : 13.5 inch | Size : S . M . L . XL



O9-012

Ankle walker with Pull -  
Lock ROM  
Height : 16 inch | Size : S . M . L . XL



O9-013

Gel Ankle Brace  
Size : one size



O9-002

Cast Sandal  
Size : S . M . L . XL



O3-003

Pull - Lock ROM Elbow Splint  
Size : One size



O5-006

TLSO Back Frame Brace  
Back Height : S/M - 18.3" L/XL 20.7"  
Size : S . M . L . XL

## Hernia, Athletic Supporter



O5-003

Athletic Supporter  
Size : S . M . L . XL . XXL



O5-004

Comfort Hernia Aid  
Size : XS . S . M . L . XL . XXL



# Arm Sling



O4-003

Arm Sling (Nylon)

Size : S . M . L . XL . XXL



O4-004

Arm Sling (Cotton)

Size : S . M . L . XL . XXL



O4-005

Adjustable Arm Sling

Size : One size



O4-021

Arm Sling w/ Swathe

Size : One size



O4-040

Childrens Arm Sling

Size : One size

# Cervical Collar



A1-001

Adult Soft Cervical Collar-Skin

Height : 8 cm

Size : S . M . L . XL . XXL



A1-002

Pediatric Soft Cervical Collar

Height : S / 4.5cm . M / 6cm . L / 7.5cm

Size : S . M . L



O1-001

Forming Cervical Collar

Height : 8 cm

Size : S . M . L . XL . XXL



O1-011

2- Piece Plastic Collar

Height : S / 7.5cm . M / 8 cm . L / 8.7cm . XL / 10 CM . XXL / 10 cm

Size : S . M . L . XL



# Elbow



**A3-001**

**3" Elastic Elbow wrap**

Size : One size



**A3-003**

**Compression Elastic Elbow**

Size : S . M . L . XL . XXL



**A3-004**

**Charcoal Compression Elbow**

Size : S . M . L . XL . XXL



**A3-007**

**Elastic Elbow Support**

Size : S . M . L . XL . XXL



**A3-014**

**Active Elastic Gel Pad Elbow Support**

Size : S . M . L . XL . XXL



**C3-009**

**Neoprene Elbow w/  
Strap Support**

Size : S . M . L . XL . XXL



**D3-006**

**Superior Airprene Tennis Elbow  
with pad**

Size : One size



**D3-007**

**Superior Airprene Elbow  
Sleeve**

Size : S . M . L . XL . XXL



**C3-001**

**Athletic Elbow Support**

Size : S . M . L . XL . XXL



**D3-001**

**Airprene Elbow Support**

Size : One size



**D3-002**

**Airprene Tennis Elbow (Lycra)**

Size : One size



**B3-004**

**Self-adhesive Elbow wrap**

Width : 3" Length : 40cm

Size : One size

# Wrist



**B4- 001**

**Weaving Wrist Support  
(Adjustable)**

Size : S/M . L/XL



**B4-002**

**Weaving Wrist Support**

Size : S . M . L . XL . XXL



**D4-009**

**Superior Airprene Wrist Wrap**

Size : One size



**D4-002**

**Airprene Wrist Support**

Size : One size



**D4-003**

**Airprene Wrist Support (Lycra)**

Size : One size



**A4-002**

**Elastic Wrist Support**

Size : S/M . L/XL



**C4-003**

**Neoprene Calf Support**

Size : S . M . L . XL . XXL



**B4-015**

**Self-adhesive Wrist Wrap**

Width : 3" , Length : 28.5cm , Size : One size



**A4-032**

**Elastic Palm with Wrist Support**

Size : S . M . L . XL . XXL



**A4-045**

**Active Elastic Gel Pad  
Wrist Palm Support (Right)**

Size : S . M . L . XL . XXL



**C4-004**

**Neoprene Wrist Support**

Size : S . M . L . XL . XXL



**A4-053**

**Active Elastic Gel Pad  
Wrist Palm Support (Left)**

Size : S . M . L . XL . XXL



**C4-001**

**Neoprene Wrist Support**

Size : S . M . L . XL . XXL



**D4-001**

**Airprene Wrist Wrap**

Size : One size



**A4-001**

**Elastic Wrist Splint**

Size : One size



**B4-003**

**Weaving 6" Wrist Splint**

Size : S . M . L . XL . XXL



**A4-003**

**Breathable Wrist Splint**

Size : S . M . L . XL



**A4-050**

**8" Air Mesh Wrist Splint**

Side : Universal for both hands

Size : S . M . L . XL . XXL



**C4-002**

**Neoprene Wrist Splint**

Side : Right or Left hand

Size : S . M . L . XL . XXL



**B4-004**

**Weaving 6" Wrist Splint**

Size : S . M . L . XL . XXL



**A4-028**

**Charcoal Compression Wrist  
w/ Thumb**

Size : S . M . L . XL . XXL



**D4-010**

**Superior Airprene Wrist /  
Thumb Support**

Size : S . M . L . XL . XXL



**C4-018**

**Wrist Thumb Splint**

Side : Universal for both hands

Size : One size



**O4-001**

**Wrist with thumb Splint  
(Right / Left Hand)**

Size : S . M . L . XL . XXL





O4-045

**Wrist Splint**  
Size : S . M . L . XL



O4-002

**Wrist Splint**  
Size : S . M . L . XL . XXL

## Thigh Knee Calf



A6-002

**Elastic Thigh Support**  
Size : Size : S . M . L . XL . XXL



A7-001

**Knee Support w/4 stays**  
Size : S . M . L . XL . XXL



A7-002

**Elastic Knee Support**  
Size : S . M . L . XL . XXL



A7-003

**4" Elastic Knee Wrap**  
Size : One size



A7-004

**13" Knee Stabilizer w/ Strap**  
Size : S . M . L . XL . XXL



A7-010

**Compression Elastic Knee**  
Size : S . M . L . XL . XXL



**B7-005**

**Self-adhesive Knee Wrap**

Width: 4.5" Length: 90cm

Size : One size



**C7-001**

**Neoprene Knee Support  
w/ 4 Stays**

Size : One size



**C7-002**

**Neoprene Open Knee Brace  
w/Hinge**

Size : S . M . L . XL . XXL



**C7-003**

**Neoprene Knee Support**

Size : S . M . L . XL . XXL



**C7-004**

**Neoprene Knee Support  
w/ Spiral Stays**

Size : S . M . L . XL . XXL



**C7-005**

**Athletic Knee Support**

Size : S . M . L . XL . XXL



**C7-006**

**Athletic Patellar Knee Support**

Size : S . M . L . XL . XXL



**C7-034**

**Knee Patella**

Size : One size



**C8-001**

**Neoprene Calf Support**

Size : S . M . L . XL . XXL



**D7-001**

**Airprene Knee Support (Lycra)**

Size : S . M . L . XL . XXL



**D7-002**

**Airprene Knee Support**

Size : One size



**D7-010**

**Superior Airprene  
Knee Brace w/ROM hinge**

Size : S . M . L . XL . XXL



**D7-011**

**Superior Airprene Knee Brace with hinge**

Size : S . M . L . XL . XXL



**D7-013**

**Superior Airprene Open Knee Wrap**

Size : One size



**D7-014**

**Superior Airprene Knee Wrap**

Size : One size



**O6-001**

**Leg Splint**

Size : S . M . L . XL . XXL



**O7-001**

**Pull-Lock ROM Knee Splint**

Size : S . M . L . XL . XXL



**C7-004**

**Pull-Lock ROM Knee Splint**

Size : S . M . L . XL . XXL



**B3-001**

**Knee Patella**

Size : One size



**A7-024**

**Active Elastic Gel Pad Knee Support**

Size : S . M . L . XL . XXL



**A7-025**

**Active Elastic Gel Pad Knee Stabilizer**

Size : S . M . L . XL . XXL



**B7-002**

**Ventilative Knee Support**

Size : S . M . L . XL . XXL



**A8-001**

**Elastic Calf Support**

Size : S . M . L . XL . XXL



**B7-001**

**Knee Patella**

Size : One size





**A7-011**

**Charcoal Compression Knee**

Size : S . M . L . XL . XXL

## Slimming Pant



**C5-005**

**Athelic Short**

Size : S . M . L . XL . XXL

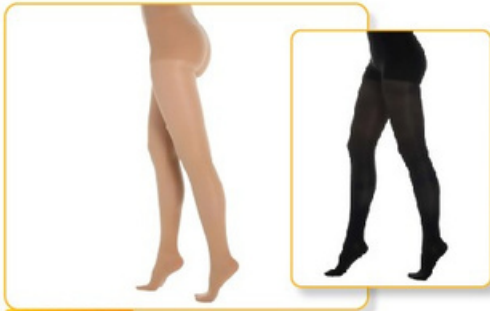


**C5-006**

**Neoprene Pant**

Size : S . M . L . XL . XXL

## Stocking



**A5-052**

**Pantyhose**

Color: Black & Beige

Size : S . M . L . XL . XXL



**A8-002**

**Under Knee Close Toes**

Color: Black & Beige

Size : S . M . L . XL . XXL



**A6-003**

**Thigh High Close Toes with Silcone Band**

Color: Black & Beige

Size : S . M . L . XL . XXL



**A8-003**

**Under Knee Open Toes**

Color: Black & Beige

Size : S . M . L . XL . XXL

# Footcare Finger



O0-004

**Folding Cot Finger Splint**

Size : S . M . L . XL



O0-012

**Silicone Tubular Protection**

Length : 15cm per piece , Size : One size



O0-014

**Silicone Full Insole Pad**

Size : SS . S . M . L . XL . XXL



O0-015

**Heel Pad**

Size : S.M.L.XL.XXL



O0-020

**Tubular Metatarsal Pad**

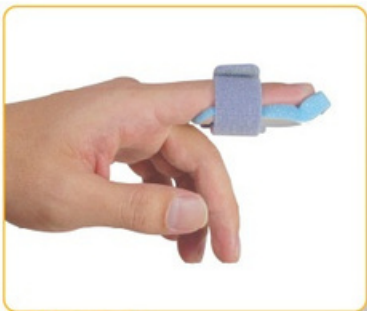
Size : One size



O0-021

**3/4 Insole Pad**

Back Height : 20.2cm , Size : S . M . L



O0-005

**Curved Finger Splint**

Size : S.M.L.XL



O0-010

**Silicone Big Toe Separator**

Size : S . M . L  
1 pair per pack



O0-011

**Silicon Hallux Valgus Protector**

Size : S . M . L



O0-017

**Silicon Toe Cap**

Size : S/M . L/XL



O0-013

**Silicon Metatarsal Pad**

Size : S/M . L/XL



O0-018

**Metatarsal Pad with Toe Retractor**

Size : S/M . L/XL